

# How to play chess

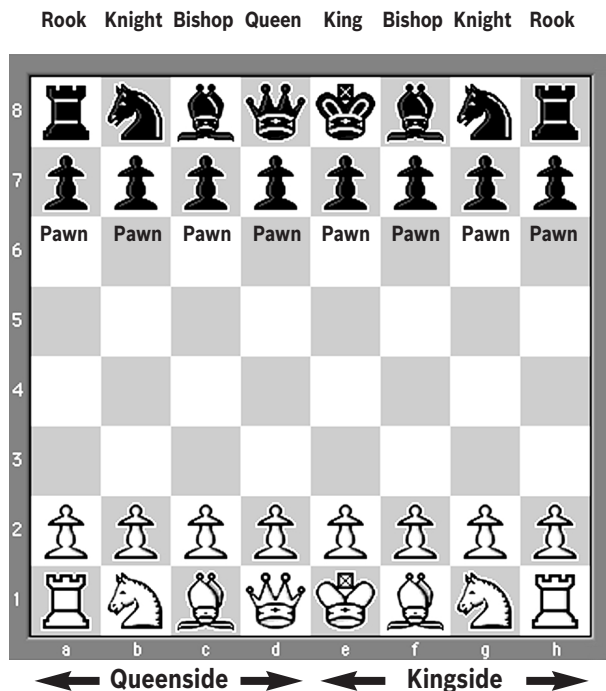
Chess is played by two players, one controlling the ‘white’ pieces, the other the ‘black’ pieces. White always moves first, then the players take turns moving.

Only one chess piece may be moved on each turn (except in the move called ‘castling’ which will be explained later).

A piece may never be moved to a square occupied by one of your own pieces. However, you can ‘capture’ or ‘take’ an enemy piece that stands on a square to which one of your own pieces can move. Just replace the captured piece with your own.

The object of the game is to attack your opponent’s King (called ‘check’) so it is unable to escape from the check at its next move. This is called ‘checkmate’, and the game is then over.

## The board, and how the pieces are set up



This is the starting position of the pieces. Things to note are:

- The Kings and Queens go opposite each other;
- The square in the bottom right hand corner is a white one (‘white on right’);
- The Queens are always on the same coloured square – white Queen on a white square, black Queen on a black square;
- Squares are identified by an a-h and 1-8 grid. For example, the white King’s starting square is e1, black’s King is on e8.

- The board is split into vertical and horizontal rows called FILES (a-h) and RANKS (1-8);
- The a, b, c and d files are called the QUEENSIDE; the e, f, g and h files are known as the KINGSIDE;
- Note, that each side has TWO BISHOPS, one each on a white square and one on a black square.
- In the diagram above, white plays UP the board, black plays DOWN the board.

---

### MORE information:

Go to the Irish Chess Union website, at [www.icu.ie](http://www.icu.ie)