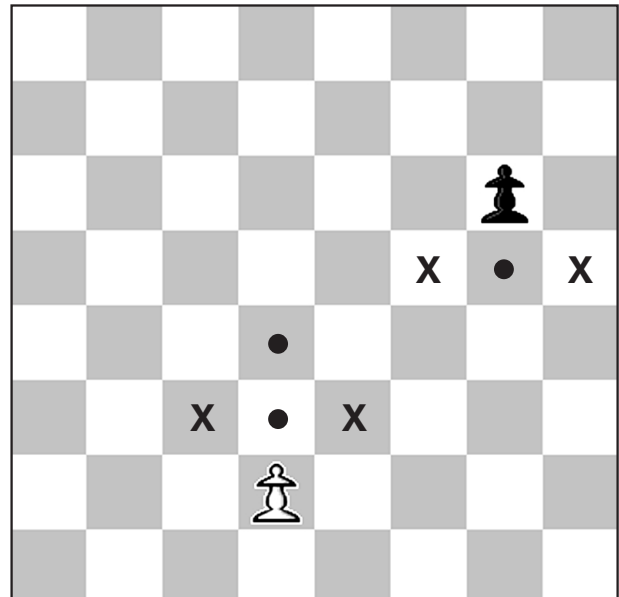


How the pieces move – PAWN

- The Pawn moves straight ahead (never backwards), but it captures diagonally (one square);
- The pawn moves just ONE SQUARE at a time, except on its first move when it has the option of moving one square or two squares;
- In the diagram, the squares with dots indicate where the pawns can move. The WHITE PAWN at d2 is on its original square so can be moved one square or two squares. Once it has moved one square it cannot then move two squares again; the BLACK PAWN, because it has moved from its original square, can only move forward one square;
- The squares on which the two pawns can capture are indicated by an X;
- If a pawn advances all the way to the opposite end of the board, it is “promoted” to another piece as soon as it lands on its final square. That piece is usually a Queen, but it can be a Rook, Bishop or Knight (but never a King or a Pawn). It is therefore possible for each player to have two (or more) Queens on the board at the same time;
- In many games, where it is impossible to achieve checkmate early on, the promotion of a pawn (and with it, a huge boost to the strength of an army) can effectively decide the game.



MORE information:

Go to the Irish Chess Union website, at www.icu.ie