

## CHECKMATE – with 1 rook (king already on edge of board)

12

This is more difficult. The Rook and the King must COMBINE together to force checkmate.

From the position, right:

### 1. Ra7

Immediately confining black's king to the 8th rank.

### 1. ... Kd8

### 2. Kd2 Kc8

### 3. Kd3 Kb8

### 4. Rh7 Kc8

### 5. Kd4 Kd8

### 6. Kd5 Ke8

### 7. Kd6 Kf8

### 8. Ke6 Kg8 (or 8. ...Ke8 9. Rh8++)

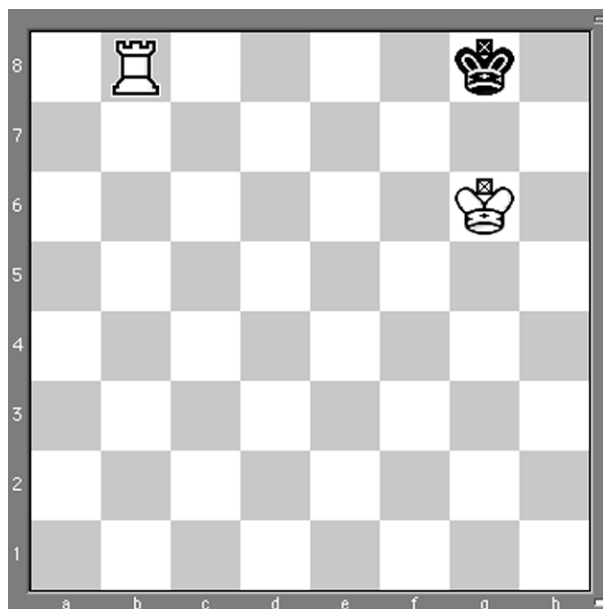
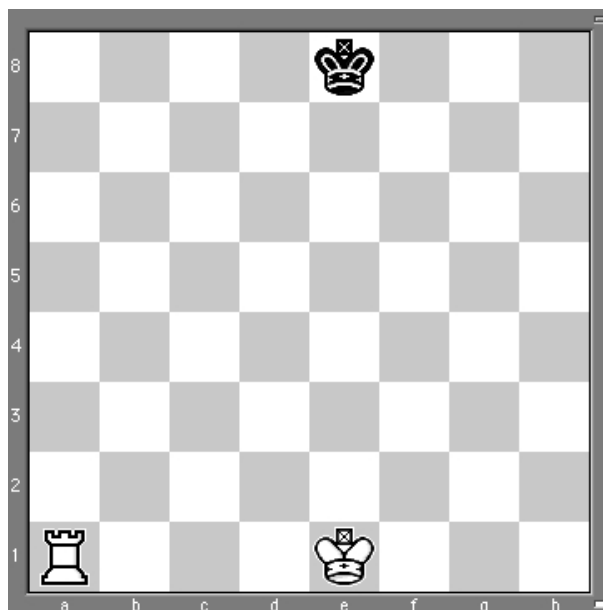
### 9. Ra7 Kf8

### 10. Rb7 Kg8

### 11. Kf6 Kh8

### 12. Kg6 Kg8

### 13. Rb8 ++ See FINAL POSITION, right



---

### MORE information:

Go to the Irish Chess Union website, at [www.icu.ie](http://www.icu.ie)