

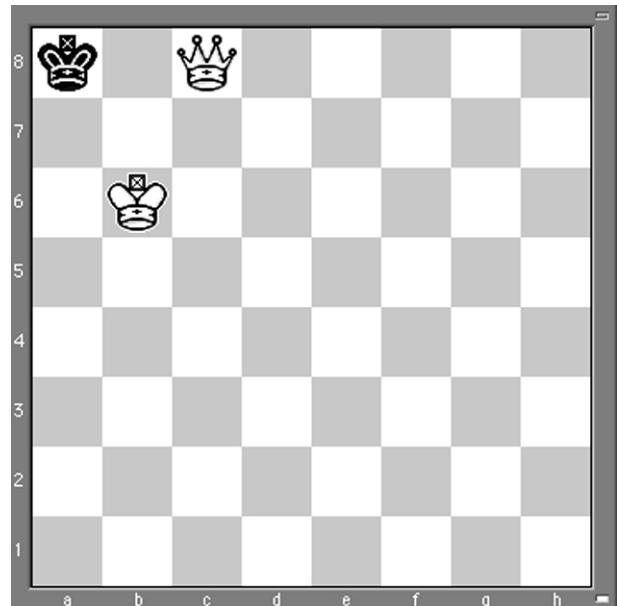
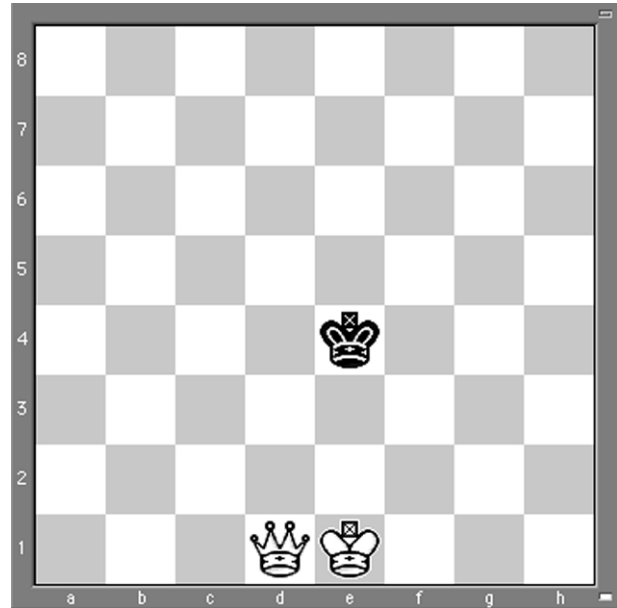
CHECKMATE – with Queen

14

The Queen can restrict the opposition King's position, then, working with the King, can drive it back to the edge of the board. Be careful, however, to avoid STALEMATE . . . this is a position in which black cannot move his King anywhere except into check. If the King can't move, and that's black's only piece, the game is drawn because of stalemate.

From the position, right:

1. Qg4+ Kd5
2. Qf4 Kc5
3. Kd2 Kd5
4. Kd3 Kc5
5. Qd4+ Kc6
6. Kc4 Kc7
7. Qd5 Kb6
8. Qc5+ Kb7
9. Kb5 Kb8
10. Kb6 Ka8
11. Qc8++ See FINAL POSITION, right



MORE information:

Go to the Irish Chess Union website, at www.icu.ie